



10 Things
Every Leader Should Know
about Otsego County

Leadership Otsego County
2016 - 2017

Otsego County Herald-Times
RECORDING PROGRESS IN OTSEGO COUNTY FOR NEARLY A CENTURY — SINCE 1875

THIS IS YOUR SKI EDITION SUPPLEMENT — NOVEMBER 4, 1965

GAYLORD

Ski Capital of Michigan

[Photograph of a skier]

1 Tourism

Golf & Ski Industries

Golf Mecca of the Midwest

<ul style="list-style-type: none"> Black Bear Golf Club 1996 Black Forest 1992 Black Lake Golf Club 2000 Elk Ridge 1991 Garland Fountains 1995 Garland Reflections 1992 Garland Swampfire 1987 Garland The Monarch 1990 Gaylord Country Club 1977 Loon Golf Club 1994 Marsh Ridge Resort 1992 	<ul style="list-style-type: none"> Michaywé - The Pines 1974 Mountain Lake Golf Club 2007 Otsego Club - The Classic 1957 & 1962 Otsego Club - The Tribute 2001 The Natural 1992 Treetops - Rick Smith Signature 1983 Treetops - Rick Smith Tradition 1996 Treetops - Robert Jones Masterpiece 1987 Treetops - Threetops 1996 Treetops - Tom Fazio Premier 1992 Wilderness Valley 1971
--	--

Question

What was the first ski resort in Otsego County?

Answer

Vanderbilt Ski Club

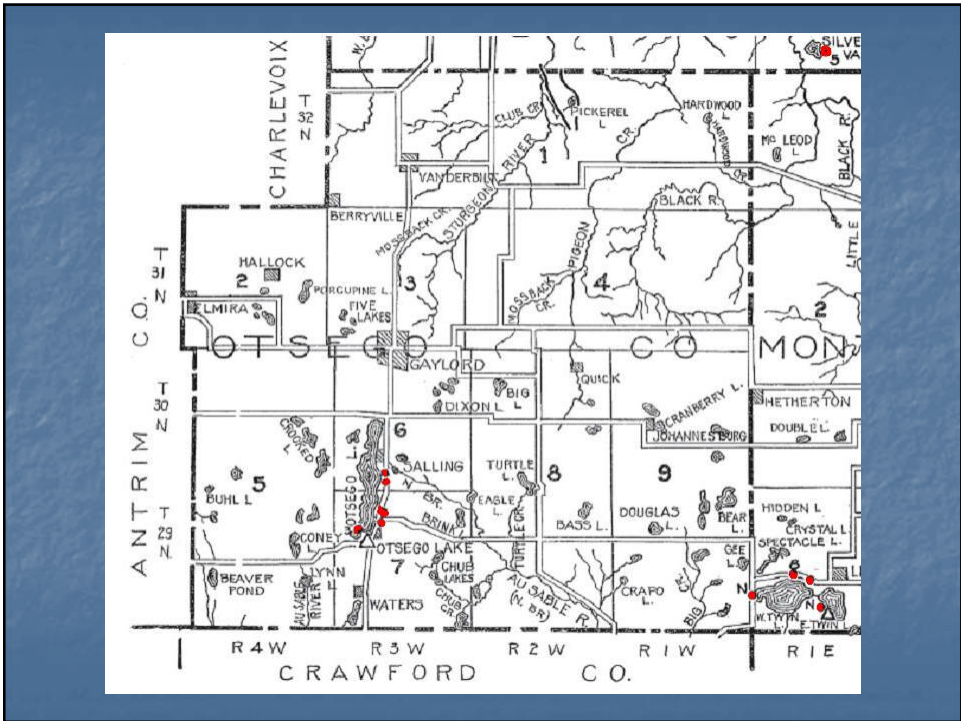
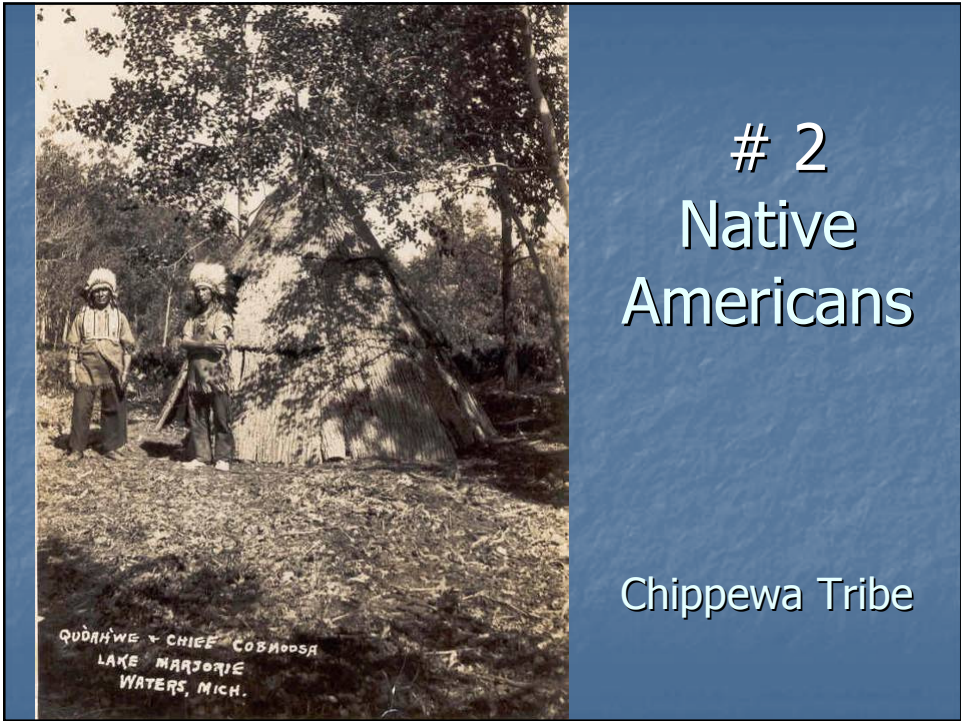


Pigeon River Country State Forest & Elk



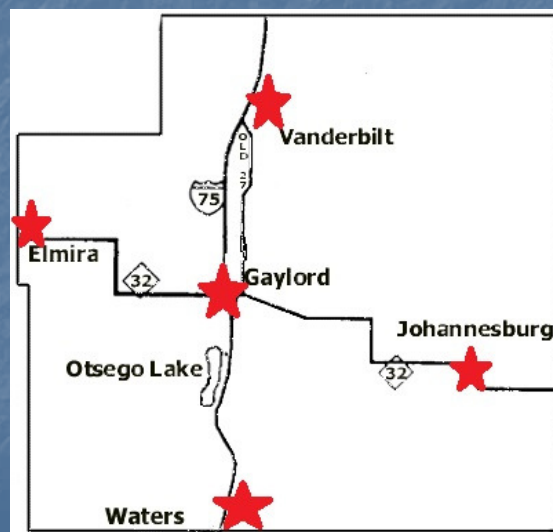
#1 Tourism **Leadership Legends**

- Ray McMullen
- Daune Weiss
- Dick Weber
- Alan Gornick
- Harry Collins
- George Doumas
- Leo Schlang
- Harold Elgas





#3 Towns Past & Present



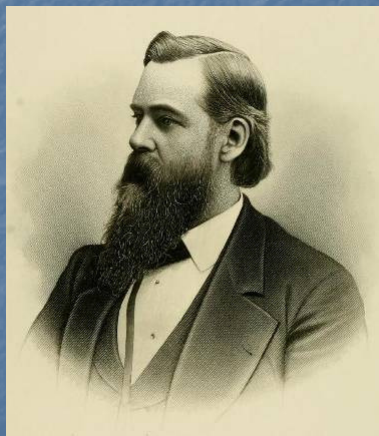
#3 Towns Past & Present

- 1873 Bradford Lake – 1885 Waters
- 1874 Barnes – 1877 Gaylord (1881 Village)
(1922 City)
- 1877 Eaton – 1880 Windsor – 1883 Elmira
- 1880 – Vanderbilt (1901 Village)
- 1901 - Johannesburg

#3 Towns Past & Present



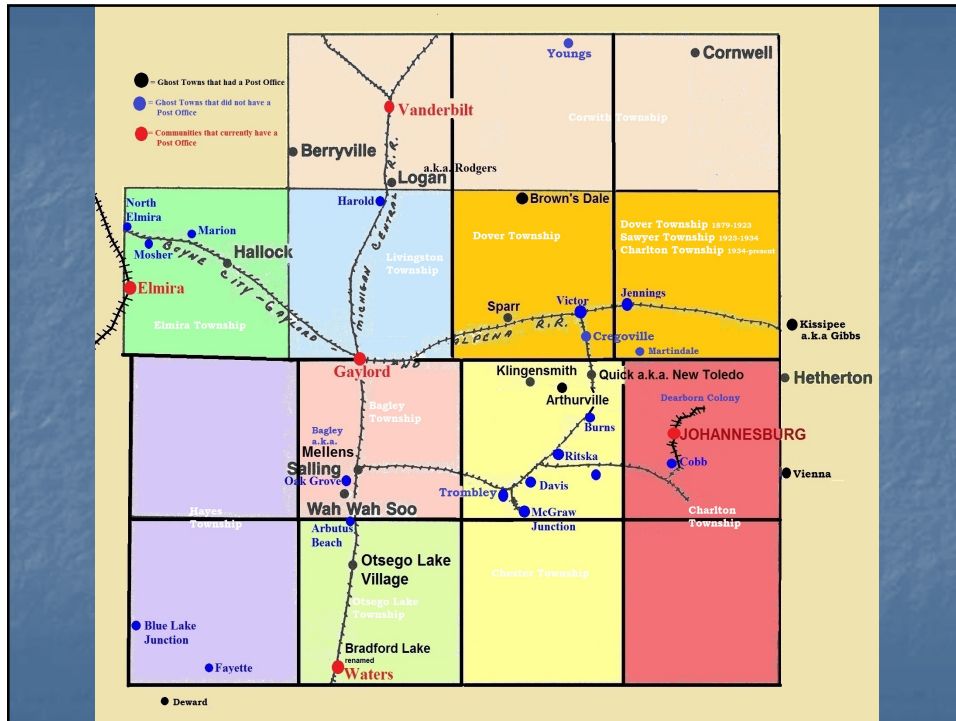
Cornelius Vanderbilt



Augustine S. Gaylord



Johanna Hanson Bay



Elmira was known as
 the

capital of Michigan

(fill in the blanks)



Extra Credit: Name these 8 people

Question:

From what town in Otsego County
does 75% of Lays Potato Chips
world-wide originate?

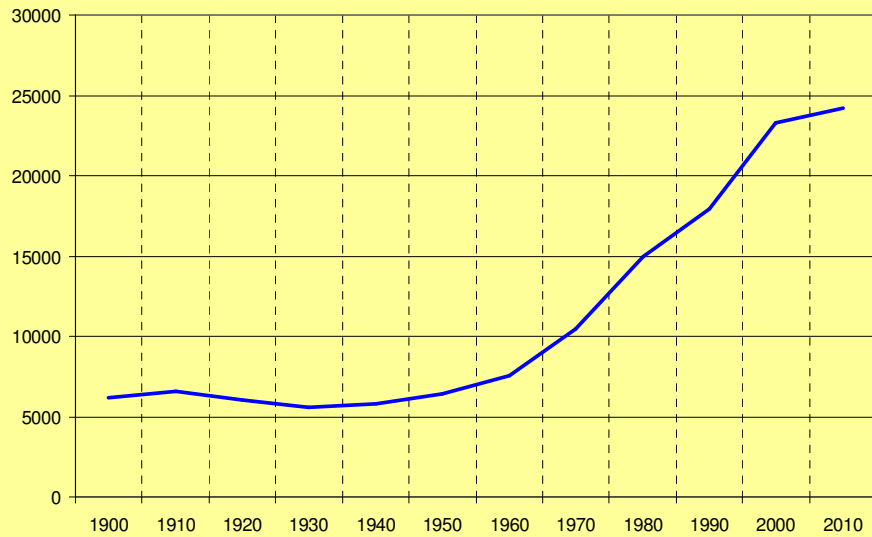


Answer

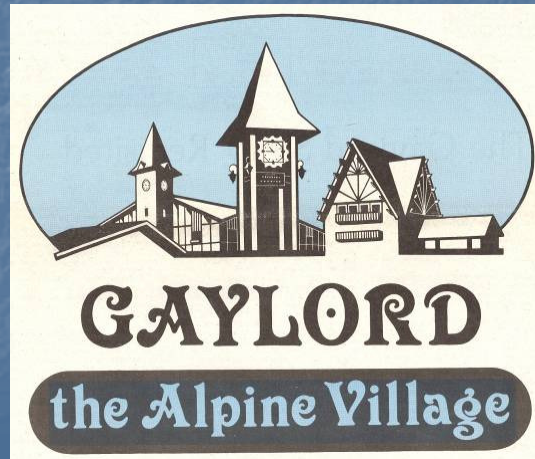
Johannesburg



Otsego County Population 1900 - 2010



4
Alpine Theme - Alpenfest



1963



W. Main Street

300 Block

Alpenfest Traditions

Since 1965



Pontresina, Switzerland

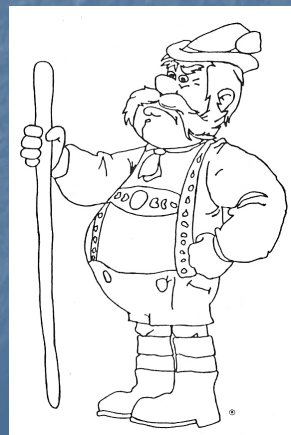


Glen's Market now Family Fare



#4 Alpine Theme / Alpenfest Leadership Legends

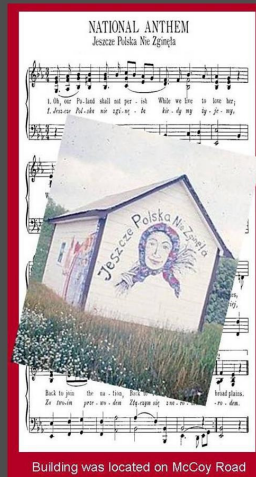
- Jim Mongeau
- Gordon Everett
- Harold Elgas
- Harry Collins
- Leo Schlang
- Bob Fritz
- C. Glen Catt
- George Doumas



5



Polish Heritage Of Otsego County



Michael and Kostanty (Kujawa) Prusakiewicz



Polish Families from early 1900 Census Reports

• Amborski	•Kaczmarek		Mackowiak	Smolarz
• Basinski	•Kierczynski		Makarewicz	Sobanski
• Bielejewski	•Kobylczak	Pomarzynski	Mankowski	Strzynski
• Blahowiak	•Kobylinski	Prusakiewicz	Marcenkowski	Swantek
• Borowiak	•Kondratowicz	Radecki	Markiewicz	Swiatek
• Butka	•Koronka	Renkiewicz	Masloski	Switalski
• Burzynski	•Koscielniak	Rolinski	Matelski	Szczepaniak
• Cherwinski	•Kosiara	Rypkowski	Matusik	Szerafinski
• Czapan	•Kostowski	Rzepecki	Merkiel	Szocinski
• Czarkowski	•Kowaleski	Sierocka	Merkiel	Tomaski
• Czerwinski	•Kozlowski	Siwecki	Muzyl	Tomaszewski
• Dypczinski	•Kucharek	Skowronski	Natonski	Tuczynski
• Dobleski	•Kujawa	Slivinski	Nowaczyk	Tyborski
• Dreffs =	•Kuras		Nowak	Waczkowski
• Dumanski	•Kwapis		Pewinski	Weitzel
• Drzewiecki	•Latusek		Piasecki	Winiecki
• Duzkowski	•Latusek		Polus	Winieski
• Eurek	•Lenartowicz			Wojciehowski
• Franckowiak	•Lewandowski			Wojtkowiak
• Gapinski				Zaremba
• Gruszczynski				Zimbicki
• Harlukowicz				
• Holewinski				
• Jaruzel				
• Jozwiak				

Polish - "English" Names

Polish	"English"
Mackowiak	McCoy
Markiewicz	Marker
Franckowiak	Francis
Lenartowicz	Fisher
Kierczynski	Krys

#5 Polish Heritage Leadership Legends

- Monsignor Kaminski
- Frank Kassuba



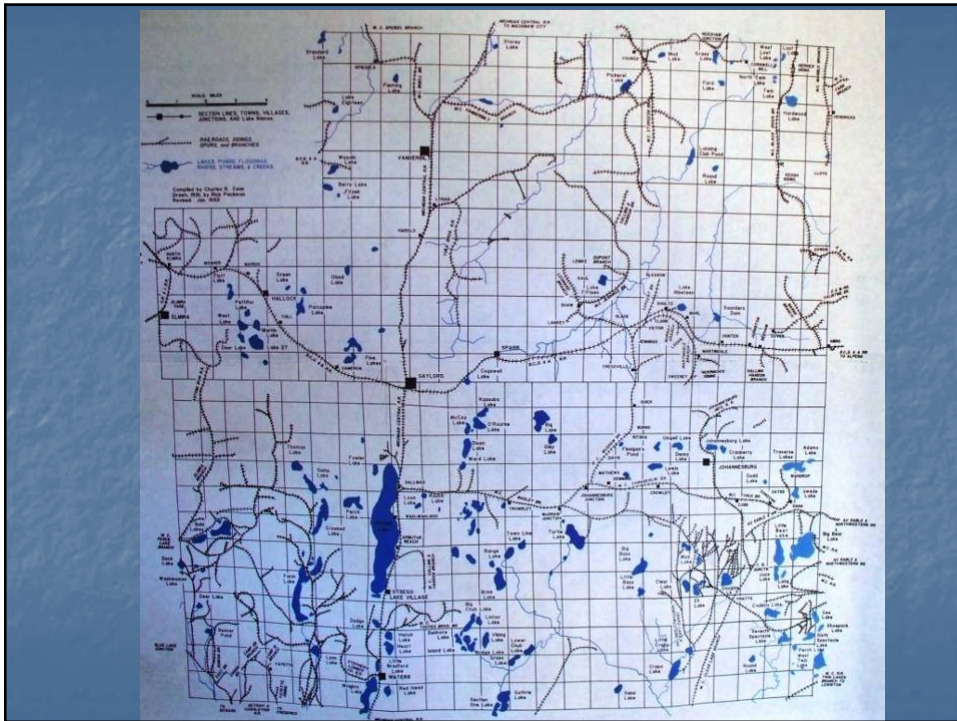
#5 Polish Heritage



6 Lumber Era



LOGGING IN MICHIGAN—A BIG LOAD.—From a Photograph by Sir, Garton, Newman.



#6 Lumber Era Leadership Legends

- Alfred Dwight
- Charles Brink
- Frank Buell
- Henry Stephens
- Lester Lunden

500,000 ACRES
OF
Choice Pine and Farming Lands
FOR SALE

THE LANDS OF THE
Jackson, Lansing & Saginaw R. R. Co.
ARE NOW OFFERED FOR SALE AT
LOW PRICES AND ON LONG TIME!

They are situated along the railroad through the central part of the State of Michigan, from the Saginaw River to the Straits of Mackinaw and contain large tracts of pine on the Tittabawassee, Rize, Munkagon, Manissee, Au Sable, and Cheboygan Rivers, the great lumbering streams of the State.

The grant having been made before any considerable quantity of land had been located in the northern part of the State, it now includes some of the finest and choicest WHITE PINE TIMBERS and best NORWAY PINE.

ALSO LARGE TRACTS TIMBERED WITH HARDWOOD, MAPLE, BIRCH, ELM, OAK, ASH, &c. The farming lands are as good as can be found in any part of the United States, and are

Well adapted to Grain, Fruit and Stock Growing.

These lands are on a great through line of railroad, connecting directly with the system of route through Chicago, Ohio, Indiana and Illinois.

TERMS OF SALE.
One fourth down, and the remainder in three equal annual installments, with interest annually at 6 per cent. Payment made on or before the 15th of October.

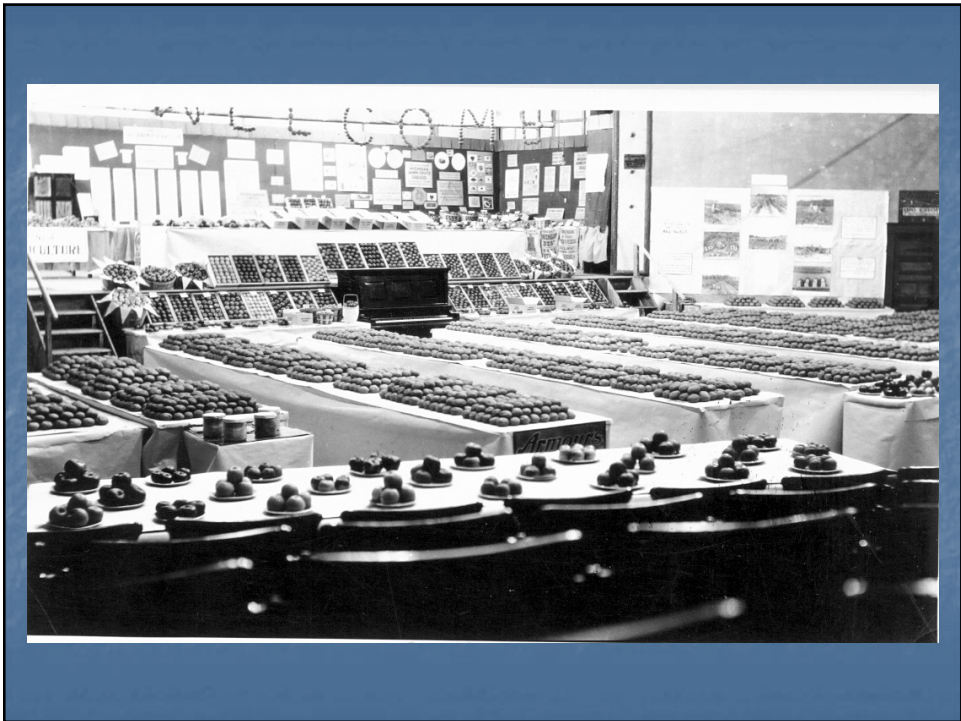
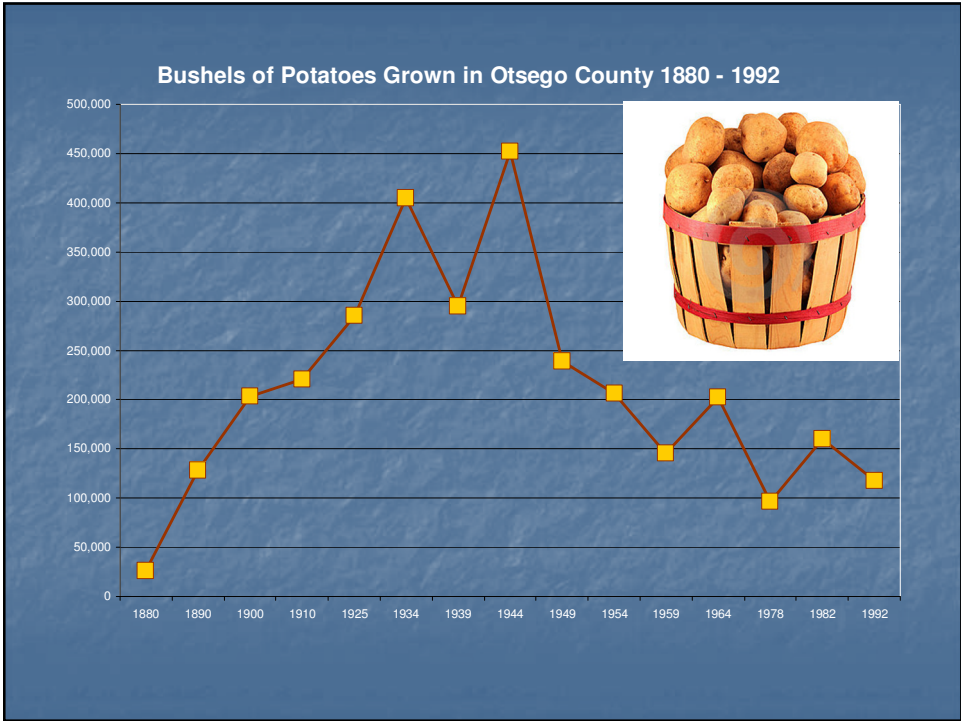
For full list of lands or further information apply to

**O. I. ROOT, Cashier Land Dept. O. M. BARNES, Land Com'r,
LANSING, MICHIGAN.**



7 Agriculture





#7 Agriculture Leadership Legends

- Estelle Family
- Frank Buell
- Frank Kassuba
- Ray McMullen



8 Major Industries

- Dayton Last Block
- Standard Products
- H & H Tube
- U.S. Plywood / Georgia-Pacific

Dayton Last Block Works



1894 – 1931





Standard Products

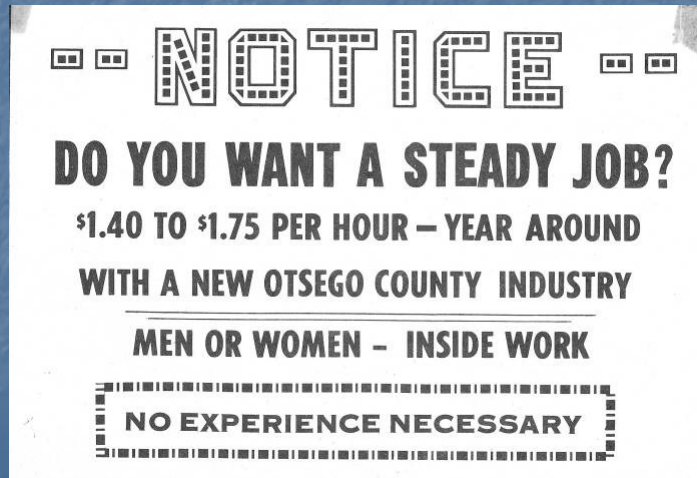




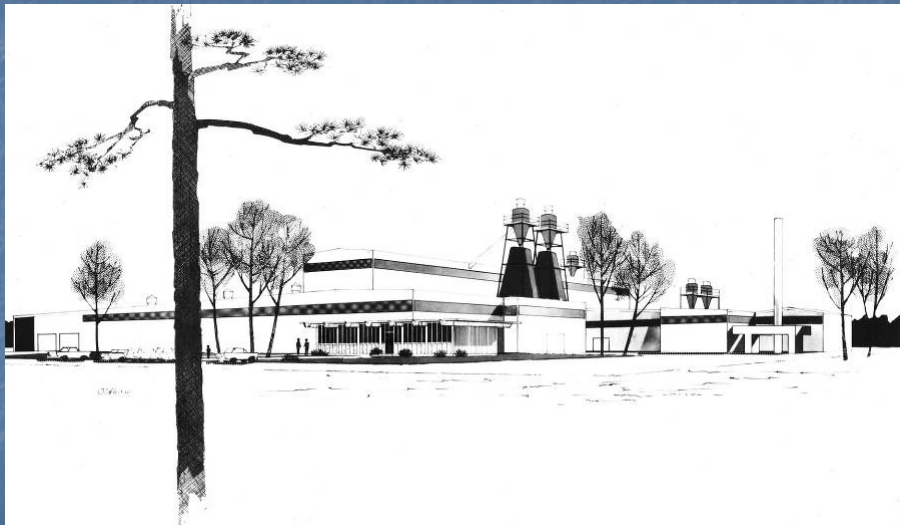
H & H Tube



What is the name of the company looking for workers?



U.S Plywood (Georgia-Pacific)

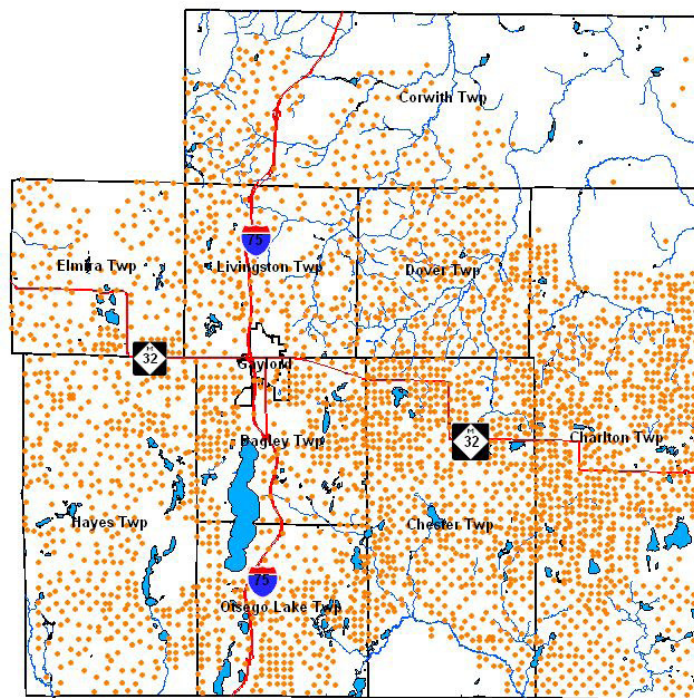




#8 Industry Leadership Legends

- Harold Elgas
- Harry Collins
- C. Glen Catt
- Lester Lunden
- Gordon Everett
- Ed Strolle
- J. Richard Yuill
- Claude Shannon

8 Oil & Natural Gas





#9 Gaylord Motor Company



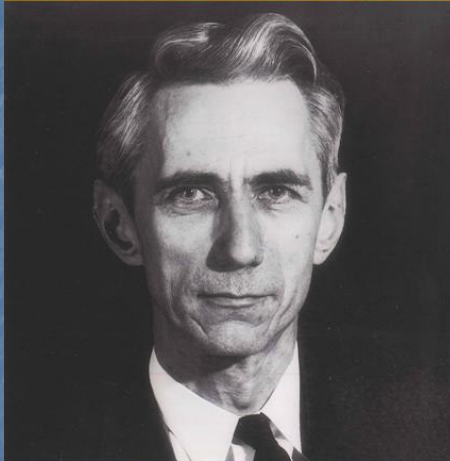
Gaylord Car



10 Claude Shannon



Gaylord High School
Academic Hall of Fame



Inaugural Inductee
Claude E. Shannon
GHS Class of 1932





Location, Location, Location



Tuberculosis Sanatorium







Witness Tree

