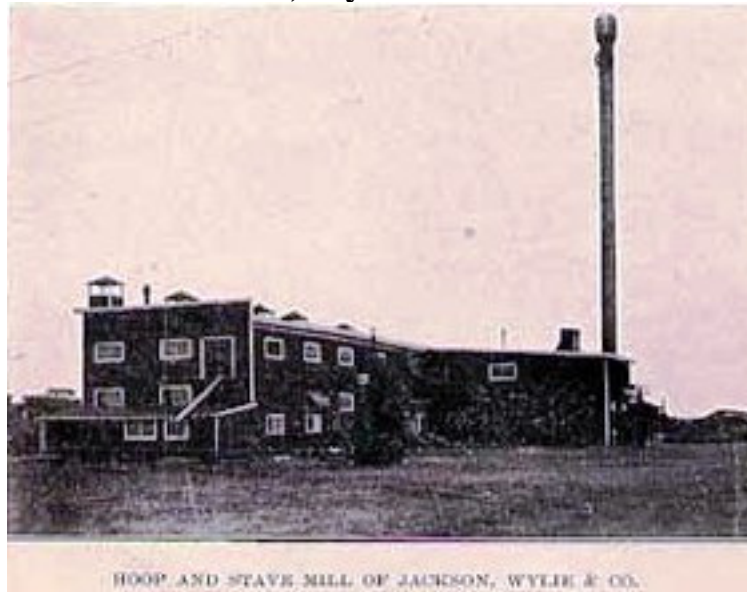


Jackson, Wylie & Co.



Manufacturing enterprises are really the life of any town and in this respect Gaylord is particularly fortunate in having a concern like the Jackson & Wylie Co. This firm manufactures staves, hoops and head linings, giving employment in the busy season to 130 people. Their plant covers 10 acres of land, uses up 6,000,000 feet of beech and elm logs a year and occupies 14 buildings. Their total amount of business for 1904 amounted to \$125,000.

The owners of the plant are W. K. Jackson, residing in Buffalo; J.T. Wylie of Saginaw; H. A. Batchelor of Saginaw; Thomas Tindle of Buffalo. James Hazard is the efficient resident manager.

Most of the finished product turned out goes to Minneapolis, Buffalo and various eastern points.

The timber manufactured comes from land owned by the company and the supply is sufficient for several years to come. This land when stripped of its timber makes excellent farms and the firm sells many acres each year on very advantageous terms to the buyer.

Since establishing their plant in Gaylord, the firm has been particularly fortunate in many ways. They never have had any labor trouble, never suffered a heavy loss by fire; no employee has been seriously injured, and they enjoy the good will of the entire community. This firm has done and is still doing much to advance the interests of our town and county.