

OTSEGO COUNTY THE LAND OF THE BIG POTATO--

FIGURES GIVING COST OF GROWING AND PROFIT



Rent for 8 acres at \$3 per acre.....	\$ 24 00
90 bushels seed at 75c per bu.....	67 50
Harrowing at \$2 per acre.....	16 00
Planting six times at 30c per acre.....	18 00
Marking.....	11 46
Cutting seed and planting, \$1.25 per acre.....	3 00
Cultivating eight times.....	10 00
Paris green.....	25 00
Putting Paris green on.....	7 00
Paid for digging.....	10 00
Straw to cover pits.....	79 00
Hauling 270 bushels at 2c per bushel.....	4 50
	43 40
Total cost of crop.....	\$333 81
The market at time of hauling was 20c 270 bushels at 20c.....	\$54 00
Cost of crop.....	303 80
Profit.....	\$130 20

The above cut is a picture of a potato field on J. B. Scott's farm in 1904. It had six acres in another field which yielded 1530 bushels, or making an average yield of 271 bushels for the eight acres. Below is the cost of growing, harvesting and marketing the crop.

This makes the crop cost only 14c per bushel marketed, while if the price had been an average price of 30c the net profit would have been \$347.20 or \$44.80 per acre.

GAYLORD A GREAT POTATO MARKET--

BUCK & BOLTON THE LEADING BUYERS

We buy and sell farm and timber lands.

Can give you good bargains in partly improved farms in Otsego County, the land of the big potato. Write

J. C. SCOTT, Vanderbilt
OR
J. B. SCOTT, Gaylord, Mich.

As a potato market Gaylord is one of the most important in Michigan. The firms do the buying, affording every facility for handling the crop. Buck & Bolton, the leading buyers, began business 15 years ago and from time to time have increased their warehouse room until they now have three large warehouses with a storage capacity of 50,000 bushels. The buildings are constructed frost proof and lighted by electricity, so that in the busy season the work of shipping can be carried on day and night. All shipments in cold weather are made in refrigerator cars, and lined to protect the potatoes from frost in transit. They are billed as perishable goods, thus insuring prompt delivery to destination. This firm pays out each year from October to June \$50,000 to \$100,000 to farmers for potatoes; employs from 10 to 15 men in the busy season, and uses 100,000 feet of lumber for lining cars. All the potatoes are graded and hand-sorted, giving them an evenness in size which the buyer considers an im-



Important feature. Large shipments are made to Baltimore, New Orleans, Memphis and numerous other points east and south. This firm has a branch ware house at Vanderbilt, and also buys in car lots at any point between Wolverine and Grayling and on the Bagley branch. An illustration of two of their ware houses is shown herewith.

Kennedy's Summer Resort

An Ideal Spot on Otsego Lake for Rest and Recuperation

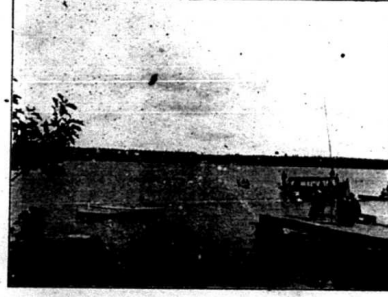
OTSEGO LAKE, in point of elevation the highest lake in the lower peninsula of Michigan, is a beautiful body of water six miles in length with an average width of one mile. It is over 700 feet higher than the Straits of Mackinac. The Michigan Central Railroad runs along the eastern shore; the western shore, with many little bays and jutting points, is yet covered with virgin forest, beautiful and picturesque to behold.

The resort is supplied with the finest of artesian well water, which has been analyzed and found to contain medicinal properties. A fleet of row boats and plenty of fishing tackle gives the visitor every opportunity to enjoy the lake and lure the finny tribe, many fine specimens being caught daily. Two pleasure launches carry visitors to any point on the lake at a low rate of fare. The finest bathing beach on the lake is at this resort, the bottom being firm white sand with no rocks or pebbles, the water as clear as crystal.

HOW TO GET HERE
Otsego Lake station, distant from the resort one mile, is located on the Mackinac division of the Michigan Central Railroad, 222 miles from Detroit and 108 miles north of Bay City. All passenger trains except one stop here coming and going. A carriage from the resort meets all trains upon request.

Rates for room and board, \$1.00 per day. A slight reduction from these rates will be made to parties staying a number of weeks. Supplies of all kinds, including fresh vegetables, butter, milk and eggs can be purchased here at lowest market prices. Those renting furnished cottages do not need to bring a single thing for housekeeping purposes. It is the aim and object of the management to treat

J. W. GRANT
Baker, Confectioner and Grocer
J. W. Grant, baker and confectioner, came to Gaylord two years ago last June, buying out the establishment of John Hanley. Mr. Grant is a practical baker with years of experience, and the goods turned out in his line are first class in every respect. His busi-



Located on the southwest end of the lake is KENNEDY'S SUMMER RESORT, an ideal spot for those seeking rest and health. Mr. Kennedy has erected a number of cottages, which are rented furnished, and also cleared spaces for campers to pitch tents. Excellent boarding accommodation is furnished those who do not care to indulge in camp life.



Nature has done her part to make this an ideal resort, and with many improvements made by the owner it is indeed a beautiful spot. Its high altitude gives immediate relief to sufferers from hay fever and kindred ailments. This resort has had patrons from nearly every state in the union, many of whom return every season.



THE COST.
The charge for each camping space is 50 cents per day, including use of row boat, fishing tackle and lumber for flooring tents. Furnished cottages are \$1.50 per day each, furnished with everything complete for light house keeping, also use of rowboat and fishing tackle. Trans-



ness has prospered amazingly since coming to Gaylord and is in every respect very satisfactory. In addition to a fine line of confectionery he also has on sale a good assortment of shelf groceries, fruits and nuts. Mr. Grant proposes another year to erect a fine store building, which his growing business fully warrants, and where he can better care for the wants of his customers.

VANDERBILT

Vanderbilt, second largest village in point of population and business enterprise in Otsego county, is located in Corwith township, north from Gaylord nearly nine miles. The village is incorporated, has a population of 500, good graded school, M. E. and Congregational church societies with good church buildings, and a full compliment of the mercantile establishments that are necessary to supply the wants of a thriving community. Two manufacturing plants—the J. A. Hixson broom handle factory and the

saw and shingle mill of Parks and Kelley—give employment to a number of people and furnish a good market for the timber of the surrounding country. This is an important shipping point for forest products and an excellent hay and potato market. The business men are enterprising and progressive and the town has a substantial, thrifty appearance. Two banks furnish excellent financial accommodation. The adjacent country is being rapidly developed into highly cultivated farms.

JOHN G. BERRY
No sketch of Vanderbilt, or in fact Otsego county, would be complete without mention of John G. Berry. This gentleman is a pioneer of this section and the owner of the largest store here. His stock comprises nearly everything needed to supply family wants and his business has grown to enormous proportions. Although Mr. Berry is a very busy man he finds time to take an occasional vacation and gets much enjoyment out of life. He is now planning a trip to New Zealand and expects to leave some time in October.

A. GLAZER
Five years ago Mr. A. Glazer decided that Vanderbilt looked pretty good to him, and established a clothing and dry goods store here. Under his excellent management the business prospered amazingly; new departments have been added until the store has really become metropolitan and now does a fine business. Mr. Glazer was united in marriage last spring to an estimable lady of Bay City, and there is every reason to believe that the future holds for him happiness and success in a large measure.

HENRY LONG
Geo. Long conducts a general store stocked with a fine assortment of goods and enjoying a gratifying business. It is fortunate when a village possesses enterprising business men of the stamp of Mr. Long. He is ever ready and willing to co-operate in any movement to advance the material welfare of the community.

D. M. SLY
D. M. Sly carries an assortment of hardware, stoves, farm implements, tools and buggies. His trade is very satisfactory and the people in this vicinity have come to know that their dealings with him result in more satisfaction than when buying from catalogue houses. In Mr. Sly's establishment Vanderbilt has a progressive hardware store.

BANK OF VANDERBILT
H. T. Glazen, cashier of the Bank of Vanderbilt, is a gentleman well versed in the banking business, who enjoys the confidence of the public. The Bank of Vanderbilt has a fine patronage which is increasing at a gratifying rate.

HIGGINS HOUSE
Vanderbilt has an excellent hotel in the Higgins house, which does a good business. Messrs. Higgins and son are hotel men of experience and thoroughly understand catering to the wants of the public.

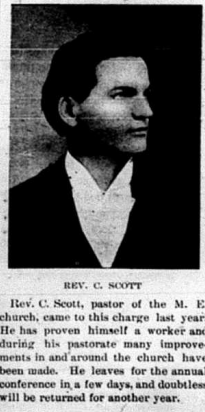
C. GARRETT
This gentleman is proprietor of the Vanderbilt pharmacy, which is modern in every respect. All the latest and necessary drugs and chemicals used in compounding prescriptions are carried in stock, together with a full line of articles found in every first class drug store.



A. GLAZER

VANDERBILT EXCHANGE BANK
The Vanderbilt Exchange Bank is in charge of Geo. C. Hooper, cashier who has demonstrated his ability by successfully building up for this bank an excellent business. Mr. Hooper is deeply interested in the future of Vanderbilt and is at present building a fine residence here.

J. A. HIXSON
In J. A. Hixson's broom handle factory Vanderbilt has an enterprise that ranks with the largest of its kind in the world. The process of manufacturing a broom handle is interesting to witness. The timber used for handles is delivered to the mill in saw logs. These logs are cut handle length by a drug saw, then passed on to a circle saw, slabbled and cut into the required thickness for turning. These are passed through a gang of saws and come out in squares ready for turning. The turning lathes are automatic feed, and a stream of handles come in rapid succession. After leaving the lathes they pass on to a finisher, which rounds one end and at the same time bores a hole in the other for the wire. From here the handles go to the dry kiln and



REV. C. SCOTT

CHURCHES AND SOCIETIES
Rev. Clement Upham, pastor of the Congregational church is a zealous worker for the betterment of mankind. The church under his ministry is prospering as never before. They have a fine edifice nicely furnished and pleasantly situated. Both church societies have the usual aids and leagues necessary for carrying on progressive church work, and also fine Sunday schools.



VANDERBILT M. E. CHURCH

A Progressive Otsego County Village

from there are placed in a huge cylinder and polished by friction to a perfect smoothness; then they are dumped into the finishing room, graded, counted and tied in bundles. The capacity of the mill is about 20,000 handles per day. All the machinery is of the latest improved pattern and many unique devices for saving labor are used. Shipments of the finished product go to nearly every broom factory in the country, their superior quality finding for them a ready market.

Vanderbilt has a full quota of secret and fraternal societies—Masons, Odd Fellows, K. O. T. M. M., Daughters of Rebekah, O. E. S. and others, all in a flourishing condition. The Masonic lodge is the oldest in Otsego county, has a fine home over Berry's store and enjoys a fine membership. The D. of R. have a fine membership, although organized only three months.