



**Post Office and Rural Delivery force on South Otsego Street.**

Bay View Reading Circle and became a federated club in 1906, duplicate Whist groups, sometimes a Chautauqua course. One of the great social events of the year was the formal dance sponsored by the Knights of Pythias.

The turn of the century brought new problems to the little town of Gaylord. The lumbering industry was beginning to slacken. Agriculture had begun to play a roll in the economy but was it enough?

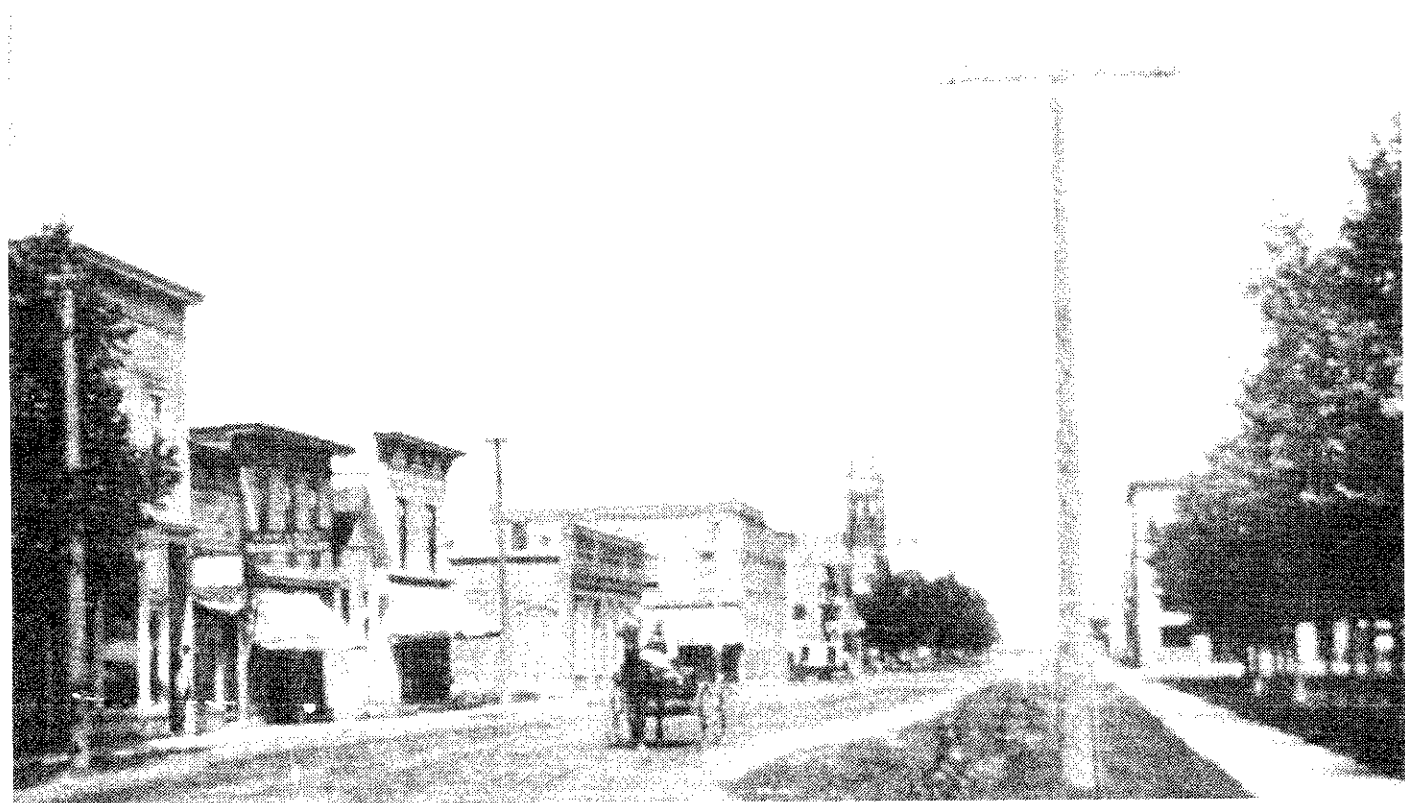
Gaylord and the surrounding area was more fortunate than many other communities. The many

lakes in the county had begun to attract people from other localities who were looking for a pleasant vacation spot. Gaylord residents as well were attracted. A group built a combination recreation shelter and boathouse on the east shore of Otsego Lake. Here they had picnics, took their boats fishing, usually on Sundays. Others came to build cottages, camping the first summer while they were building. Thus the resort business began, at first in a small way, then expanding into a major industry.

During these years the business leaders were always looking for opportunities to help the community prosper, always ready to promote a project if it held promise of permanence. Factories were encouraged to locate here . . . but not all factories. They were carefully investigated first; no one wanted a "fly-by-night" coming here.

Local businessmen financed an automobile assembly plant which produced the Gaylord Car. Unfortunately, the project failed financially after only a few cars had been produced.

Other ideas were more successful. Some local businessmen bought the land where the State Park is now located. They bought land for the first Otsego Ski Club east of Gaylord. The City donated six acres of a city park for the hospital and "baled" the Fair Association out of debt and restored the Fair Grounds to them after the Depression in the 1930's. An



**View from First Street looking north**