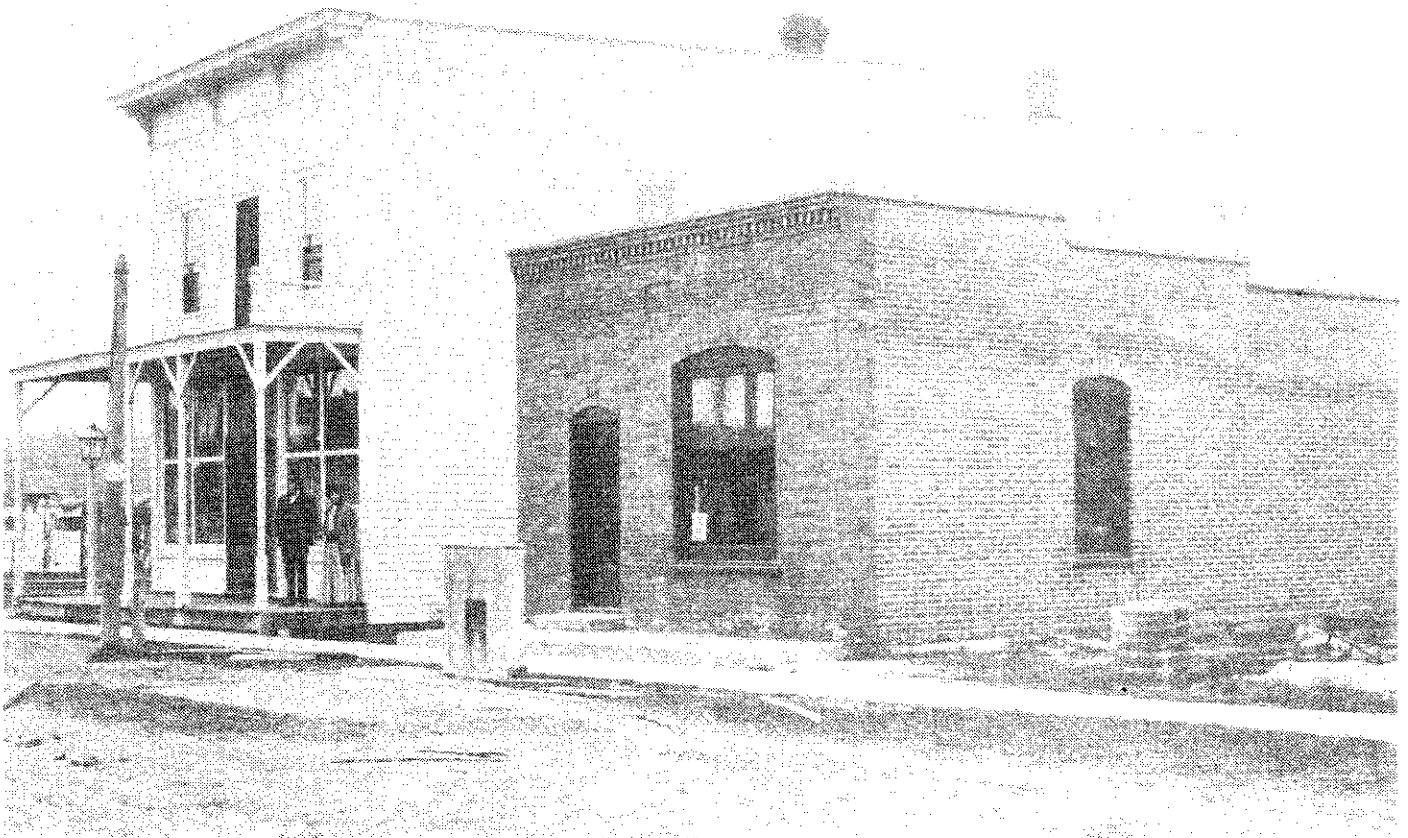


continue to be the most wonderful country in the World. Elmira is no different from tens of thousands of other cities, towns and villages and rural areas in our country. Like others, we respect and love our country and will defend it against those who destroy our way of life.



Pennsylvania Railroad train stuck in the snow near Elmira in Winter of 1947.



Elmira Bank of Buell and Wickett taken in 1908