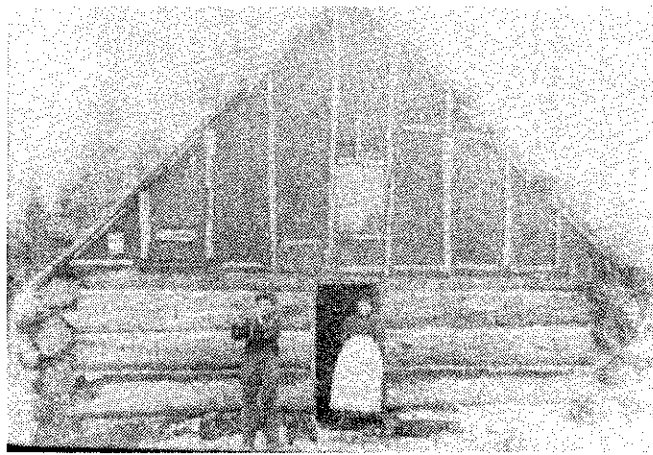


added to those already in the river and in the spring the whole drive was successfully carried through to the mouth of the AuSable. Mr. Brink superintended the building of the dams as foreman for Adams and Dwight Company (afterwards Smith, Kelly and Dwight Company). Lumbering was again carried on the following winter, 1870-71, the farm at Crooked Lake furnishing most of the supplies. In the fall of 1872 the Jackson, Lansing and Saginaw Railroad construction reached the County and the village of Otsego Lake was established. Civilization had come to Otsego County.



Typical of early logging camps . . . Boy blowing a "Gabriel Horn." Most logging camps had such a horn to call men to meals.



Big Logging Wheels